

Hong Kong Lutheran Theological Seminary Upgrade its Wireless Network with Altai Technologies' Super WiFi Solution

With the growth of mobile Internet and student's increasingly digitized lifestyle, the Hong Kong Lutheran Theological Seminary ("LTS") abandoned its own wireless broadband network in search for the best wireless solution to cope with the changes. LTS had been doing product trials of different WiFi based stations until they tested Altai's super WiFi solution and found it to be the ideal solution due to its outstanding performance. The long range technology of Altai A8 base station is able to provide 100% coverage in LTS.

To enable internet access for students using their WiFi-enabled devices (such as laptops, cellphones and PDAs) and staying connected with academic services such as course management, library, campus portal and email at anytime, anywhere, a high capacity, high speed and reliable wireless broadband network is required. The Altai super WiFi solution is able to provide high quality WiFi coverage over longer distances.

There were a few challenges in setting up the wireless network in the campus as it is a dynamic environment and required a high throughput for multi-users. The Altai A8 WiFi Base Station and A2 WiFi Pico Access Points were installed in the outdoor areas of the campus to provide 100% outdoor and indoor coverage.

By utilizing innovative wireless technologies, A8 WiFi Base Station effectively provides much larger coverage than the original system. It also provides a more secure and robust WiFi network with an unprecedented range.

The A2s increased the system capacity as well as extending the signal coverage,

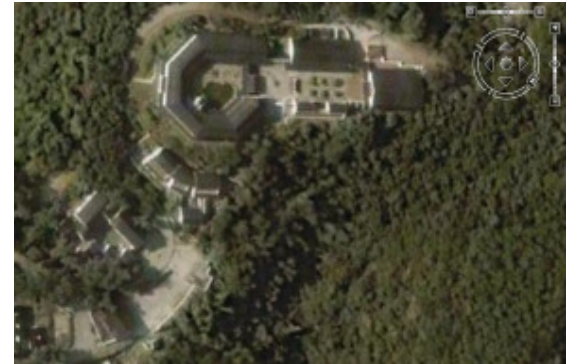


delivering cost-effective, high capacity WiFi systems to LTS. The high throughput capability allows Altai WiFi system to support a larger number of multi-media users. The end-to-end QoS and WMM features ensure good voice quality over high volume of data traffic such as video streaming. The Altai Wireless Management System (AWMS) is used to remote administer and control WiFi base stations in the network. It helps reduce the workload in running the network as well as the operating cost.

Thanks to Altai's adaptive antenna positioning feature, setting up a WiFi system has never been so easy and affordable than before, especially at such a hilly environment where LTS resides. The whole network merely required one day to set up, and is currently running smoothly in LTS. The maintenance cost of the network was greatly reduced due to the higher reach technology; fewer base stations were required in the network. Altai provided inexpensive, convenient and high quality WiFi coverage for LTS as an outstanding alternative to its original wireless system.

About Lutheran Theological Seminary

Lutheran Theological Seminary was founded in 1977 as a major theological institution in Asia. Its students come from over 15 different countries around the globe. LTS has trained several hundred professional workers as well as thousands of lay leaders for Chinese churches since its establishment.



Requirements

- Low maintenance, scalable wireless network
- Able to handle a large number of simultaneous users
- Stable WiFi signal
- 802.11b/g multimode
- Triple play WiFi support and bandwidth for interactive applications and video streaming

Solution

- Altai A8 base stations and A2 to provide full WiFi coverage
- Altai Network Management System (AWMS) is used for monitoring the network performance

Benefits

- The new network has significantly improved uplink and downlink performance
- Altai wireless broadband solution has provided 100% outdoor and indoor coverage
- The high performance of A8 has greatly reduced the number of mounting locations, which help to minimize the entire cost of deployment and maintenance

For more information, please visit www.altatechnologies.com